

Private Stately Home

Refurbishment and New Leisure Works

Project Background

The works consisted of the repair and restoration of the buildings fabric to prevent further damage to the internal areas of the property. A number of new leisure installations have also been carried out during the construction period. All works were delivered in line with Covid-19 safe working practices. A more detailed summary of the works undertaken are as follows.



Construction of full sized tennis court

Our Clients brief was a relatively simple one. "Theres the Land, please can you give me some options for a tennis court." We researched and resourced a number of options. We presented these to the client with images and samples and Ultimately the specification was agreed as below....

Value

£750k

Duration

36 Weeks

Summary of Works

- Refurbishment and new leisure works
- Covid-19 safe working practices
- A mixture of traditional and modern construction techniques

- Full sized tennis court with AstroTurf surface.
- Green perimeter fencing to blend into the back ground, installation of electricity meter and power.
- Supply of floodlights and power for a tennis ball machine.
- Competition line markings/nets and umpires chair

The first process was to set out the area and steak it out. We then reduced levels using machines and a laser level. The spoil was set aside for reuse by the landscapers on site. A batter was formed due to the differences in levels. The area was civilized, checked for levels and rolled.



Once the edgings and the stone had been complete the installation of the fencing commenced. At this point we also formed the bases for the floorlights out of formwork and concrete and had western poer install the new power supply. A distribution boar and meter was installed into a timber built shed.

With the fencing complete compaction of a 30mm 6mm to dust screed layer was added to the stone and the artificial grass was fitted. The line markings were cut into the grass and silica sand was brushed into the grass to help with drainage and traction. The floodlight masts were erected.



The external perimeter of the site was set out and marked again. A heavy duty weed membrane was laid and Type 1 stone was imported and edgings were installed, land drainage was also installed at this point.

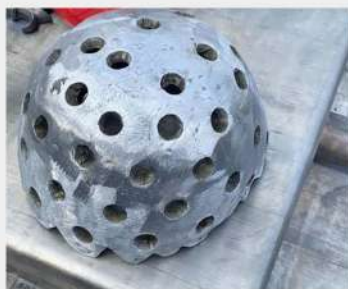
Turret Lead Replacement

Damage had been caused to a ceiling in the turret of this home. Trident were instructed to erect a scaffold and investigate the issue it became apparent that an attempt had been made, to repair a section of damaged lead roof with a rubber roofing membrane that was not fit for purpose or compatible. We liaised with the architect and other authorities and we were instructed to repair the roof back to its original glory.

The lead was removed and safely lowered to the ground and we discovered that some of the existing deck had become damaged. The scaffolders were called in to add further safety measures which would allow us to replace the deck. The joists were also replaced and the deck reinstated with penny gaps and correct falls for drainage



Once the deck was ready to receive the lead, bays were calculated and formed with mop stick hand rail. The lead was cut at ground level, lifted up and laid with skill and care inline with the current code of practice. The lead was welded where necessary and cut into the existing channel in the stone work. Lime mortar specified by the architect was used to point. The lead was then cleaned and coated with patination oil. The finished roof was inspected and approved before striking the scaffold.





Lead Roof Renewal

We have renewed a number of lead roofs using similar techniques to the turrets across the site that were leaking and causing internal damage. All of timber deck, gutters and lead were replaced as part of the works

External Works

Supply and fit of York Stone and Cobbles. These were sourced locally to match existing



Restoration of Staircase

Bespoke carvings to the original staircase had been damaged/snapped off. We were instructed to replace these decorative oak carving's and stain to match the existing.





New Boiler and Plant Room Installations

- Isolations, drain down and clearance of existing basement plant room.
- Positioning of 3no new boilers, pipework alterations.
- Alterations to pipe work to enable zoning modifications.
- Remove and replace flue.
- Installation of 3no. GRP oil tanks
- New BMS and smart controls



info@trident-construction.co.uk



0115 990 2993



www.trident-construction.co.uk



Healthcare

Education

Commercial

Heritage

Care

Trident Construction Services Ltd are a Client focused Principal Contractor with a passion for collaboratively delivering quality construction projects. Please contact us to discuss your project.